



# products



MADE IN ITALY

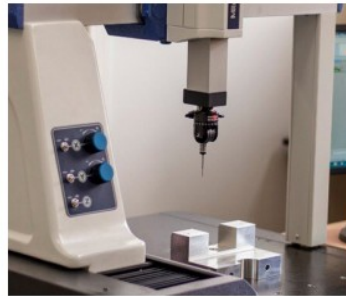
## ABOUT US

Founded in 1967, the MEMOLI Company has been manufacturing manual and motorized bending machines ever since, for more than 50 years. The Company started as a small craft-men workshop, which then developed its technologies and products to suit them to nowadays requirements.



## MECHANICAL DESIGN

Each Memoli machine is a unique and customized product, specifically designed to fulfill every single Customer's needs and resulted from the multiple possible combinations of models, sizes and equipment. Our commitment is constantly oriented at Customer satisfaction, because we believe in a long-lasting relationship with our dealers and our direct user Clients.



## PRODUCTION

Made in Italy products are a guarantee: high quality and security standards mark Memoli machinery as a product of excellence, thanks to the long time expertise gained through decades in manufacturing machines capable of becoming really favorable solutions for the market requirements.

We also offer a consulting service through our internal technical department, which is always available to study and find out the best possible solution: our goal is actually our Customer's complete satisfaction.



## Eureka

Manual universal bending machine

P 4-5



## Eurekamatic

Universal machine for bending pipes and metal bars

P 6-7



## ETM

Tube&Pipe bending machine

P 8-9



## ETM with mandrel

Tube&Pipe bending machine with mandrel

P 10-11



## BA e CP30

Angle rolls bending machine

P 12-13



## Custom machines

Turn key

P 14



## ETM Software

Tube bending software

P 15



# Eureka

## Manual universal bending machines



Eureka is a patented manual system, one machine only for four different applications: angle-bending, circle-curve bending, scroll bending and tube bending with two options to bend with or without mandrel. Our universal manual bender is the perfect solution to bend tubes, flat metal material, solid steel, square tubing and profiles, both on heat-treated and cold material as well.

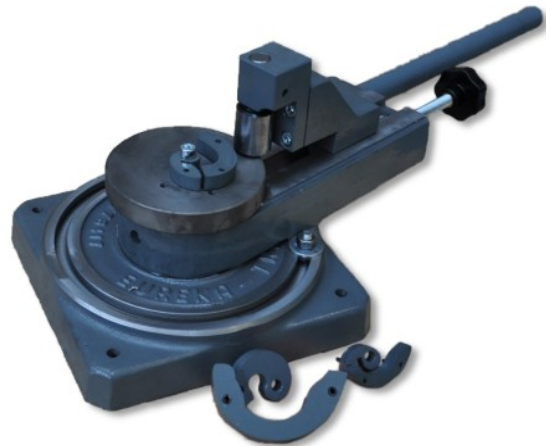
Its large base grants a safe and reliable use. The bending operation is carried out **manually** by pulling the traction lever until the required bending degree is reached. A removable stop enables the user to set the desired graduation and to repeat the application easily and with accuracy.

With more than 50,000 units sold ever since 1967, Eureka still remains today the most versatile manual bending machine for the applications of various fields such as mechanical engineering, general plant construction engineering, car workshop, hydraulic, dynamic oil engineering.

### Eureka ES

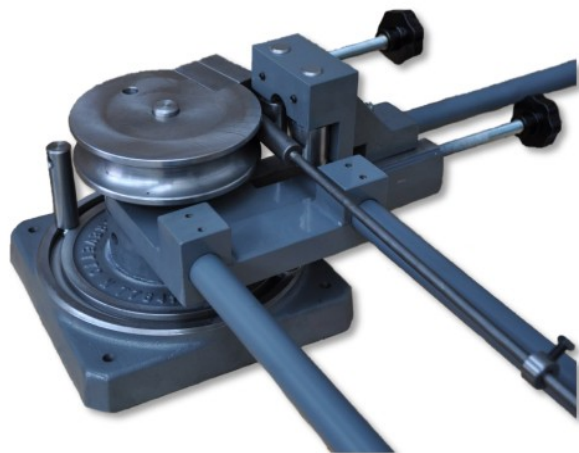
Scroll-spiral bender

The matrix is interchangeable for different types of spirals



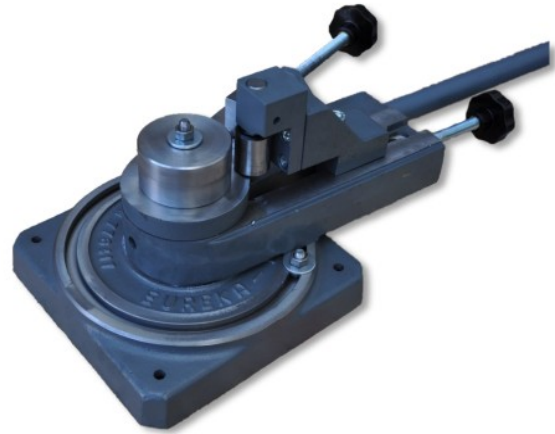
### Eureka ET

Tube&Pipe bender with/without mandrel



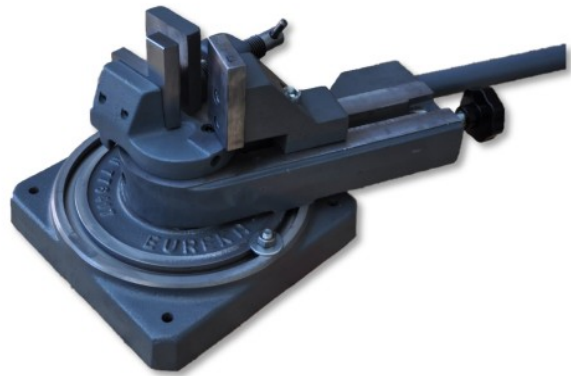
## Eureka EC

Circle-curve bender



## Eureka EP

Angle bender



Maximum capacity (mm)

Material	ES	ET	EC	EP
FE37 solid round	Ø 12	-	Ø 25	Ø 25
FE37 solid square	12	-	23	23
FE37 flat	30 x 12	-	50 x 10	50 x 10
Copper&Aluminum solid round	-	-	Ø 30	Ø 30
FE37 pipe	-	Ø 28 x 1,5	-	-
Copper&Aluminum pipe	-	Ø 30 x 2	-	-
INOX pipe	-	Ø 25 x 1,5	-	-

*All data may be subject to change without notice.*

# Eurekamatic

Universal machine for bending pipes and metal bars



One machine only for **5 different operations**: circle-curve bending, angle-bending, tube bending with two options to bend with or without mandrel, scroll-bending and twisting.

Machined from solid cast iron block and designed to work cold iron, it is extremely easy to use because it is run and aided by an **incorporated software**, which allows total precision and efficiency of the curving system. The display shows the desired angle of curvature and constantly informs the operator about the position and **movements of the curving axis**.

The **software** allows the storage of 45 different angles of curvature. It is very easy and fast to change toolings. The machine can work both in manual and in **semi-automatic** mode, thus reducing working times and error possibility. It is also possible to have the clamping vice either pneumatic or hydraulic, besides some more customized options depending on the Customer's specific needs.

Eurekamatic has been for many years so far one of the most requested and used machines by **blacksmiths** for their applications on tubes, profiles and square tubings, in order to carry out railings, hand-rails, tables, chairs, doors, windows, gratings and many more.



## Technical specifications

Motor power	KW3
Rotation speed	7 - 14 g/1'
Gears	In oil
Weight	230 kg
Size	850 x 620 x 980 h.

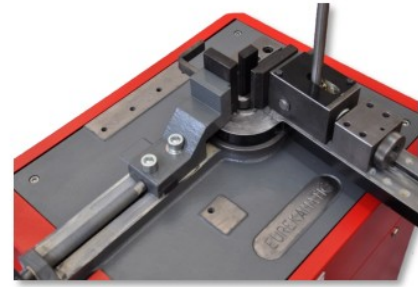


## Control panel

- ✓ User-friendly
- ✓ Digital screen
- ✓ Tactile keyboard
- ✓ RAM
- ✓ Safety-mode

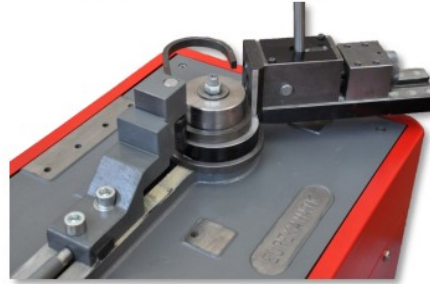
## Eurekamatic AB-PF

Angle bender



## Eurekamatic AB-CF

Circle-curve bender



## Eurekamatic AB-CTA

Tube&Pipe bender with/without mandrel



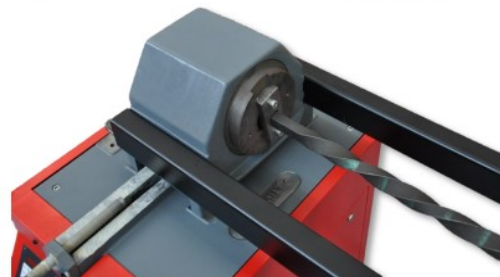
## Eurekamatic CS

Scroll-spiral bender



## Eurekamatic D

Twister



Maximum capacity (mm)

Material	AB-PF	AB-CF	AB-CTA	CS	D
FE37 solid round	Ø 25	Ø 25	-	Ø 12	-
FE37 solid square	22	22	-	12	25
FE37 flat	100 x 10	50 x 15	-	30 x 12	40 x 10
FE37 pipe without mandrel	-	-	Ø 40 x 2	-	-
FE37 pipe with mandrel	-	-	Ø 30 x 2	-	-

All data may be subject to change without notice.

# ETM

## Tube&Pipe bending machine



The ETM series is equipped with state of the art technologies meant to bend with or without mandrel tubes and profiles, and capable of bending both in right and left direction. It allows to bend tubes with a range diameter from 8 mm up to 150 mm and it can make curves over 180° with top finish quality for a minimum bending radius of 3 x the tube diameter. Every ETM machine is manufactured from single welded steel block and the toolings are machined from solid steel.

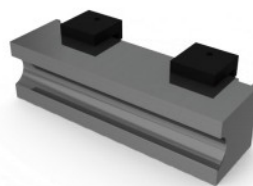
The system of counter formers is specifically designed to reduce mechanical effort and to make the bending operation faster than other brands machines of the same category, thus granting a very good finishing even when bending very thin wall thicknesses.

Thanks to its new software technology called "Digital Bend Programming Touch Screen", this machine is extremely easy to use: this software in fact was specifically studied for our machines and enables to select up to 99 programs each of them with a 5-stop sequence in the bending operation and to automatically adjust the material springiness (*springback*). Moreover, it allows to save and store one's projects as repeatable programs.

### ETM 60



### ETM 76



Slider for delicate pipes

#### Technical specifications

	ETM60	ETM76	ETM90	ETM120	ETM150
Motor power	KW2	KW4	KW2,2	KW3,5	KW5,5
Rotation speed	5 g/1' *	5 g/1' *	3 g/1' *	1 g/1' *	0-5 g/1'
Gears	In oil	In oil	In oil	In oil	In oil
Weight	200 kg	270 kg	800 kg	1050 kg	2500 kg
Dimensions	600 x 500 x 950	850 x 620 x 890	900 x 800 x 1000	1200 x 900 x 1200	1000 x 1200 x 1100

\* possibility of variable speed.



## ETM 90



## ETM 150



Positioner



Automatic positioner

## Maximum capacity (mm)

Material	ETM60	ETM76	ETM90	ETM120	ETM150
FE37	60 x 4	76 x 3	90 x 6	114 x 8	150 x 9
Steel ST35	64 x 5	70 x 5	90 x 8	114 x 8	168 x 8
Aluminium	64 x 6	76 x 6	100 x 8	140 x 9	169 x 9
INOX AISI 308	60 x 3	74 x 3	90 x 5	114 x 5	150 x 6
Solid round	40	45	55	80	110
Square pipe	50 x 50 x 3	60 x 60 x 3	70 x 70 x 6	110 x 110 x 5	140 x 140 x 6

All data may be subject to change without notice.

# ETM with mandrel

Tube&Pipe bending machine with mandrel



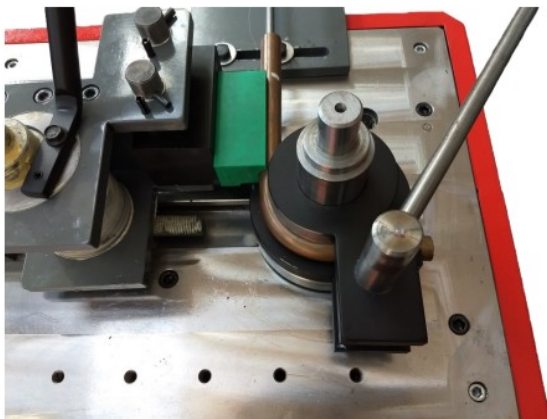
The ETM series with mandrel is perfect for bending thin tubes with tight radii, without deforming the tube. These machines have a bending range capacity from 10 to 90 mm diameter, with minimum bending radius of 2 x the tube diameter.

According to the various needs, the machines can be equipped with different options:

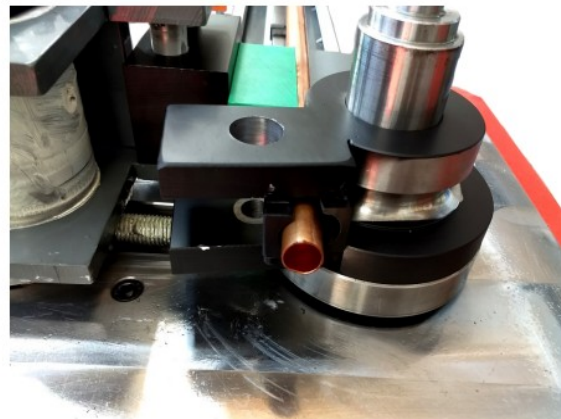
- ✓ Manual eccentric vice and fixed mandrel
- ✓ Eccentric clamping with hydraulic mandrel advance
- ✓ Hydraulic and automatic cycle mandrel clamping

## ETM 76

Simple plug



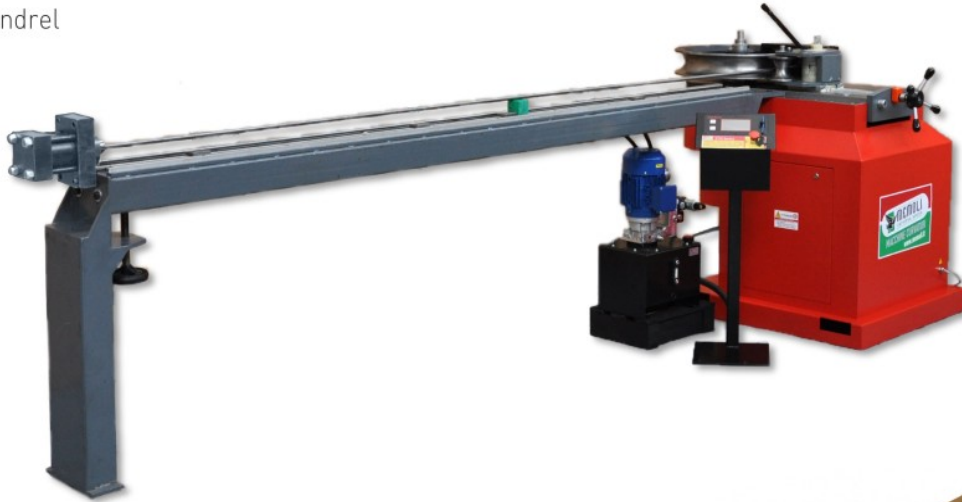
Eccentric vice, top view



Eccentric vice, front view

## ETM 90

Electro-hydraulic bending machine  
with mandrel



Wiper die



Positioner with mandrel



Mandrel

Maximum capacity (mm)

Material	ETM 60	ETM 76	ETM 90
FE37	50 x 4	63.5 x 1,5	80 x 3
Inox 304	50 x 3	60 x 2	90 x 3
Aluminum	50 x 8	76 x 4	90 x 4
Square pipe	40 x 40 x 4	60 x 60 x 2	70 x 70 x 3

*All data may be subject to change without notice.*

# BA

## CNC angle roll bending machine







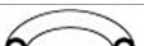

The BA machines are benders with **computerized numeric control (CNC)** which work either in manual or automatic mode and allow the direct insertion of the bending radius and of the data to obtain multiple forms and different developments.

They are equipped with **three driven rolls**, with a smooth surface for a perfect finish without any wrinkle.

The **electronic control** consists of a PLC central 32 bit system for control of the movement of the AXIS A1-A2 and of an industrial computer 1.86GHz - RAM-DDR3 2GB, complete with HD C-Fast 4GB. The operator easily and intuitively interfaces with a **monitor IOFM - LCD-VGA 15"** colored screen with active matrix, both of them assembled on detached mobile pulpit. The multilingual bending program "**Probending system**" allows the data acquisition of the type of material and the section of the profile, with possibility of storing the performed jobs and default bends. An interpolated axis system grants the execution of **variable radius bends**.

These machines are finally equipped with ramps of acceleration and deceleration, stop and inversion of the cycle, self-learning program and mirror cycle. The electronic control of the speed settings of the bending roll movement (up to 32 mm/sec) and of the profile displacement (up to 30 RPM) is carried out either in manual or automatic mode. Direct and fast connection is allowed in **remote access to a personal computer** for auto diagnostic and automatic set up of the machine.

### Maximum capacity (mm)

Section	BA 20		BA 35		BA 50	
	Dimensions	MIN. INT. Ø	Dimensions	MIN. INT. Ø	Dimensions	MIN. INT. Ø
	10 x 3 20 x 5	170 200	-	-	-	-
	6 x 6 10 x 10	60 80	-	-	-	-
	20 x 20 x 1,2	120	20 x 20 x 1,5 40 x 40 x 2	200 1000	20 x 20 x 1,5 50 x 50 x 4	300 1000
	20 x 10 x 1,2	120	25 x 15 x 1,5 50 x 30 x 2	250 1000	25 x 15 x 1,5 70 x 40 x 3	300 1000
	6 x 1 20 x 1,5	60 120	60 x 1,5	800	80 x 2	800
	16 x 8 x 1,2	120	30 x 15 x 2 50 x 30 x 2	350 1000	30 x 15 x 2 70 x 30 x 2	400 1000

### Technical specifications

	BA 20	BA 35	BA 50	CP 30
Pump motor	KW 1,1	KW 3	KW 4	KW 0,75
Drive motor	KW 0,37	KW 1,1	KW 2,2	
Variable rotation speed	g/1' 1-30	g/1' 1-30	g/1' 1-24	6,8 g/1'
Shafts diameter	20 mm	35 mm	50 mm	30 mm
Rolls diameter	On demand	On demand	On demand	128 mm
Weight	302 kg	520 kg	765 kg	190 kg
Machine dimensions	600 x 800 x 1130 h.	740 x 1020 x 1110 h.	850 x 1130 x 1260 h.	770 x 680 x 1210 h.
Console dimensions	570 x 660 x 1120 h.	590 x 710 x 1200 h.	590 x 710 x 1200 h.	

All data may be subject to change without notice.

# CP 30

## Angle roll bending machine



The CP30 bending roller machine has been designed to minimize the manufacturing costs and thus obtaining maximum bending performance on **tubes and profiles**.

This machine was designed and manufactured to make applications with various types of profiles such as flat iron or sheet metal, T profile, U profile, angle bending, solid rod bending (both square and round), to scroll tubes and square or rectangular tubing, and all of these shapes in many different materials as well, such as iron, carbon steel, stainless steel, brass, copper, aluminum.

Our machine is **foldable** and can work both in horizontal and vertical position.

It is equipped with two driven rolls: the two lower rolls are driven and knurled for a better traction; mechanical adjustment of top roll with position monitored by millimetric rod and graduated goniometer.

The possible applications are many, ranging from greenhouses or chairs manufacturing to an endless variety of workings.

## BA 50



## CP 30



### Maximum capacity (mm)

CP 30		
Section	Dimensions	MIN. INT. Ø
	20 x 6 50 x 10	200 350
	30 x 6 80 x 15	200 350
	10 x 10 30 x 30	200 350
	40 x 40 x 3	800
	50 x 30 x 3	800
	20 x 20 x 3 50 x 50 x 7	250 400
	20 x 20 x 3 50 x 50 x 7	250 400
	30 x 15 x 4 50 x 25 x 5	250 350
	50 x 25 x 5	400
	10 x 30	100 600
	60 x 1,5	800
	3/8" GAS 1 1/2" GAS	150 400
	40 x 40 x 5	350
	40 x 40 x 5	350

All data may be subject to change without notice.

# Custom machines

## Turn key

One of our strength points is the realization of special machines meant to bend and curve any metallic material.

They are designed and manufactured on **specific custom needs**, combining the best **technical solution** with the **budget possibility** of our Customers, aiming at granting top high production rates and optimizing the costs. These machines are manufactured and assembled with top quality mechanical and electronic parts in order to grant them a higher level of reliability.

Our **design project service** is always at our Customers' complete availability for the analysis and feasibility of their projects for cost estimate, lay-out and final realization of the required suitable machine.

## Cold spring machine

Spring internal  $\varnothing$  80 mm, round  $\varnothing$  60 mm



## Augers machine



## Big radius ETM

CLR 700 mm



# ETM Software

## Tube bending software

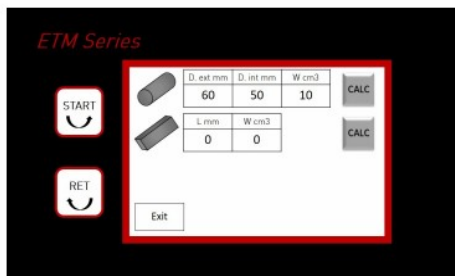
Every ETM series machine is supplied with the "Digital Bend Programming Touch Screen" special software, extremely easy to use due to the intuitive "Touch" screen.

Thanks to the latest generation technologies it is possible to access main features as:

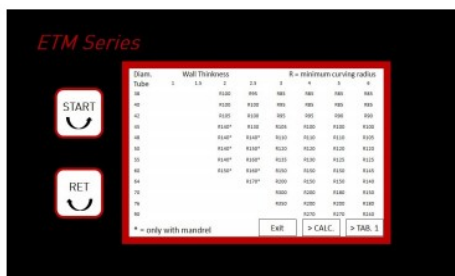
- ✓ Storage of **99 programs**, each of them with a 5-stop sequence in the bending operation
- ✓ Calculation of the machine **maximum bending capacities** with reference to the material size to be bent
- ✓ Graphic of the **minimum bending radii**
- ✓ Setting of springiness material estimate (*springback*)



Main menu



Machine capacity calculator



Radii of bending (min)



### Some more functions

- ✓ Working mode: either manual or automatic
- ✓ Change of measure unit: either inches or millimeters
- ✓ 100 MB hard disk
- ✓ Alarm diagnosis
- ✓ Maintenance notice

# MEMOLI

Via Magellano 13  
20863 Concorezzo (MB) ITALY

Tel.: +39.039.6042210

Whatsapp: +39.351.8612073

Fax: +39.039648437

E-mail: [memoli@memoli.it](mailto:memoli@memoli.it)

Website: [www.memoli.it](http://www.memoli.it)

MADE IN ITALY