



Cutting | Bending | Welding | Automation



# TL730S

▪ Flagship '4+1' Full-track Heavy Duty Tube Beveling Fiber Laser Cutting Machine ▪

## Company Culture

### MISSION

Intelligent manufacturing changes future

### VALUES

Customer-focused and employee-based

### VISION

Become a respectable enterprise in the global metal forming equipment field

## Company Profile



**19**

Global Branches



**100+**

Countries Covered



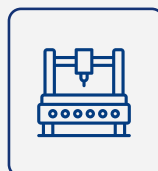
**4**

Manufacturing Bases



**30+**

Global Service Centers



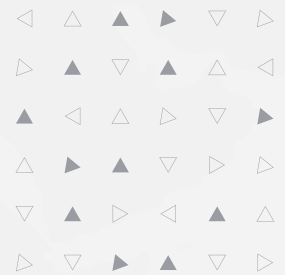
**8,000+**

Annual Capability



**135,000m<sup>2</sup>**

Occupied Area



# TL730S 6000-20000W

Flagship '4+1' Full-track Heavy Duty Tube Beveling Fiber Laser Cutting Machine



## Technical Parameters

Technical Parameter	TL730S
Power	6000-20000W
Rotating Speed of Chucks	45m/min
X/Y-axis Positioning Accuracy	±0.1mm/m
X/Y-axis Repositioning Accuracy	±0.1mm
*Tailing Length	0
Cutting Capacity	Round tubeΦ120 - Φ715mm Square tube□120-500mm Rectangular tube≤715mm and Side length≤120-500mm
Weight of Single Tube	4000kg
Overall Dimensions(L*W*H) with Loading Racks	38000*6500*5000mm
The range of pipe material	3000-16000mm

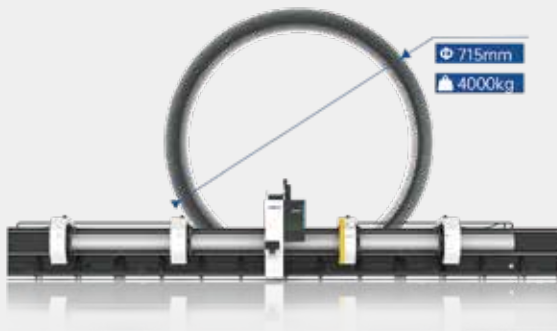
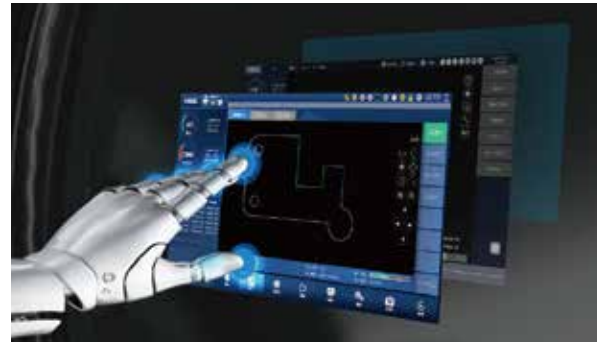
\*Only when the nesting material is reasonable can it be achieved

\* Machine appearance, technical parameters, function description, data comparison shown in this page are from HSG in-house laboratory.

All testing results and experimental data shall be subject to real machine.

## HSG-X Bus Control System

- Simple Interface  
Clear interface is convenient for users operating and shows cutting data in real time to save time and costs.
- Functional Integration Control  
A number of core functions are showed centrally on the interface to reduce operating steps and users can easily learn to operate.



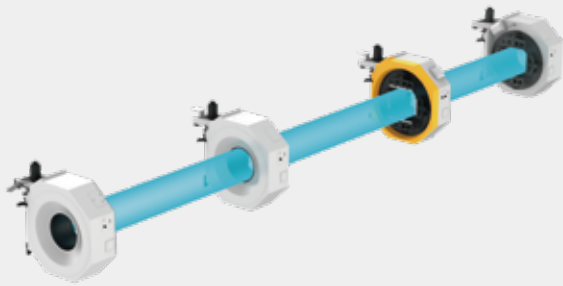
## Max Heavy-duty Tube Processing Ability The machine can process tube diameters in 715mm.

- The machine can process tube diameters in 715mm.
- Tube Length: 16m
- Weight per Tube: 4000kg

## Innovate 4+1 Chucks Structure

- C3 chuck and C4 chuck are combined to achieve double support.
- There are 4 points clamping at loading section and the load bearing improved significantly.
- Clamping near the cutting area at 2 points which the accuracy is effectively guaranteed.





## Intelligent digital chuck

- The chuck and the control system can communicate with each other to achieve full closed-loop control.
- \* The machine has functions in jaw state detection, tube size measurement and adaptive adjustment of clamping force.

## Beveling Processing

- HSG-LA4 tube beveling tube cutting head to achieve 0-45° beveling cutting.

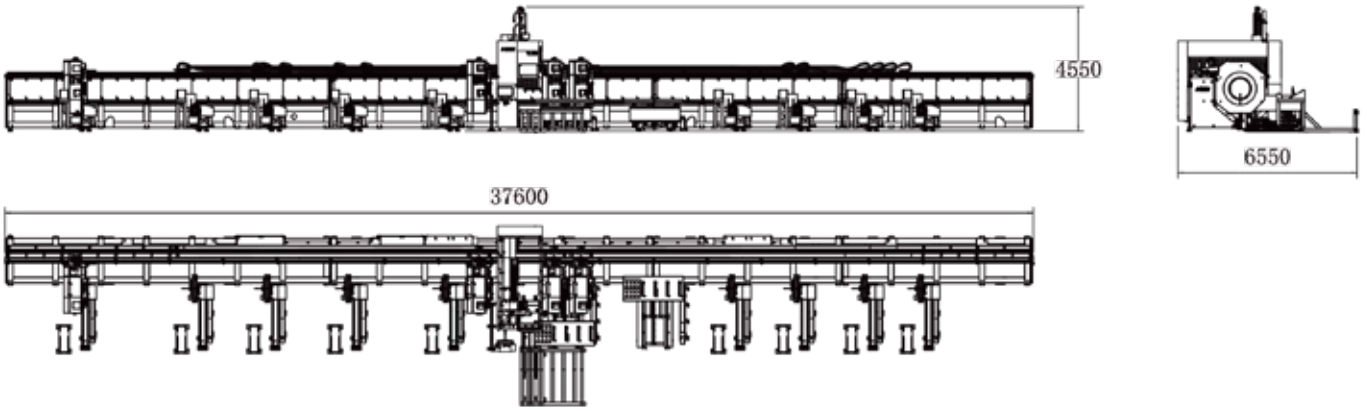


## Multiple Apertures Hot Melting -Drilling-Tapping Technique

- Self-equipped with tool database to achieve automatic knife shifting.

# Machine Foundation

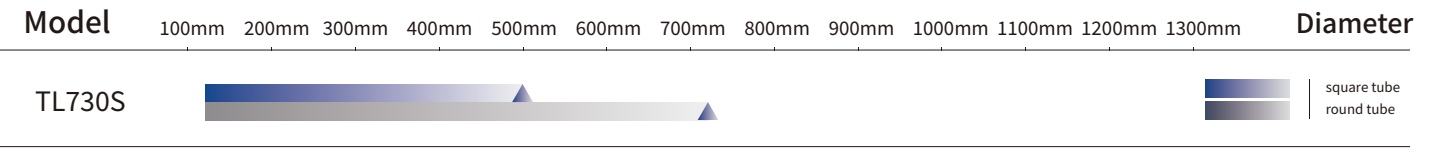
\*The marked size has about 10mm error



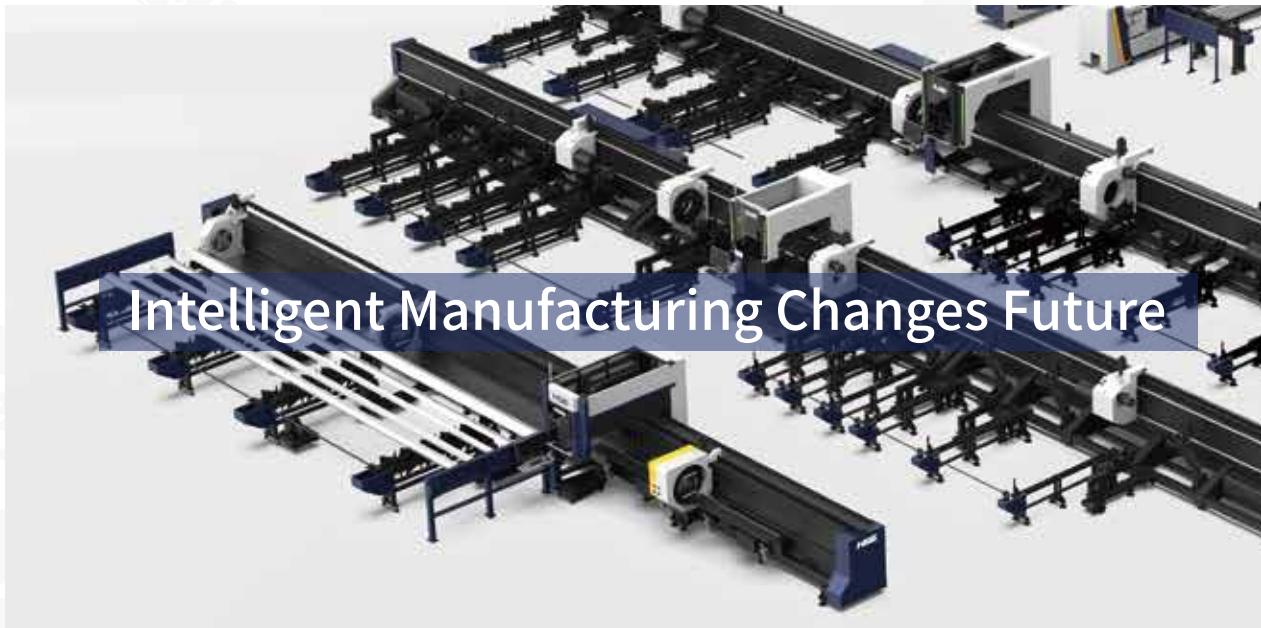
## Cutting Samples



## Cutting Capacity



The actual machines shall prevail and above data & pictures are only for reference.



## Intelligent Manufacturing Changes Future



**As a global enterprise, HSG sticks to providing professional and convenient service support to customers at home and board**



### Professional Training

Multiple technical training service and free operation training for customers and dealers in time



### Efficient Support

Humanistic service model, online services and 7\*24 hotline to offer solutions and assistance



### Optimized Transport

Multi-channel transport solutions and professional transport solution team will provide various transport cases for to satisfy the demand of customers and save transports fees



### Sufficient Accessories

Highly efficient accessories delivery service, multiple network inventory jointly responds to accessories demand to shorten customer's waiting times and accelerate production



### Careful Services

Domestic door-to-door service and free proofing, global 100+dealers provide efficient and convenient services



Intelligent Manufacturing Changes Future



Website



Facebook



Youtube

Headquarters Add.: No. 4, Anye Road, Shunjiang Community Industrial Park,  
Beijiao Town, Shunde District, Foshan, Guangdong, China  
Website: [www.hsglaser.com](http://www.hsglaser.com)  
Email: [info@hsglaser.com](mailto:info@hsglaser.com)  
Tel: +86 757-66833906