



Cutting | Bending | Welding | Automation



# TS 2

✦ Economical and High-speed Tube Laser Cutting Machine ✦

## Company Culture

### MISSION

Intelligent manufacturing changes future

### VALUES

Customer-focused and employee-based

### VISION

Become a respectable enterprise in the global metal forming equipment field

## Company Profile



13

Global Branches



100+

Countries Covered



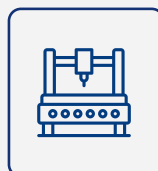
4

Manufacturing Bases



30+

Global Service Outlets



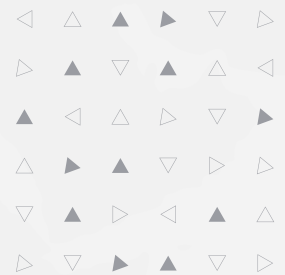
8,000+

Delivery Capability



96,000m<sup>2</sup>

Occupied Area



# TS 2 1500-6000W

## Economical and High-speed Tube Laser Cutting Machine



### Technical Parameters

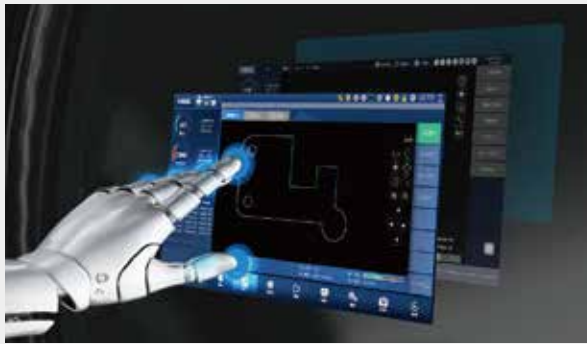
| Technical Parameter                             | TS2   |
|---|---|
| Power   | 1500-6000W  |
| Rotating Speed of Chucks                        | 100r/min  |
| Max. Linkage Speed                              | 100m/min  |
| Max. Linkage Acceleration                       | 1G  |
| X/Y-axis Positioning Accuracy                   | ±0.03mm/m   |
| X/Y-axis Repositioning Accuracy                 | ±0.03mm   |
| *Tailing Length                                 | Tailings in Single Chuck Clamping Model ≥85mm, Tailings in Double-chuck Clamping Model ≥195mm |
| Cutting Capacity                                | Round tube Φ20 - Φ240mm<br>Square tube □20*20 - □240*240mm<br>Side length: 20-240mm           |
| Weight of Single Tube                           | 200kg   |
| Overall Dimensions(L*W*H)<br>with Loading Racks | 12500*4700*2500mm   |
| The range of pipe material                      | 1000-6500mm   |

\*Suggested Tube Length in Single Chuck Clamping ≤500mm, Weight of Tube ≤5kg

\* Machine appearance, technical parameters, function description, data comparison shown in this page are from HSG in-house laboratory.  
All testing results and experimental data shall be subject to real machine.

## High Speed and Intelligent for Better Processing

- High Speed and Precise  
High-speed data transmission without time delay and strong positional energy control.
- High rotational Speed and Air Velocity  
Bus system and servo motor reduce unproductive time.

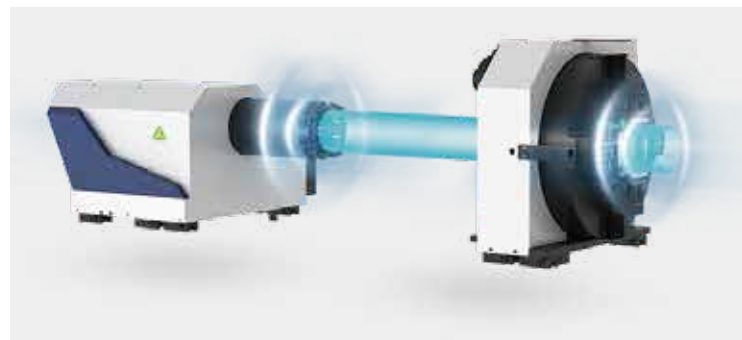


## X9000 Bus-based Tube Cutting Control System

- Simple Interface  
Clear interface is convenient for users operating and shows cutting data in real time to save time and costs.
- Functional Integration Control  
A number of core functions are showed centrally on the interface to reduce operating steps and users can easily learn to operate.

## Rectangular-circle Pneumatic Chucks

- One-key clamping and automatic centering.
- Clamp heavy tube stably by large and constant clamping force.
- Expand clamping range of square tube.  
 $\Phi$  240mm round tube ,  $\leq$  240mm square tube





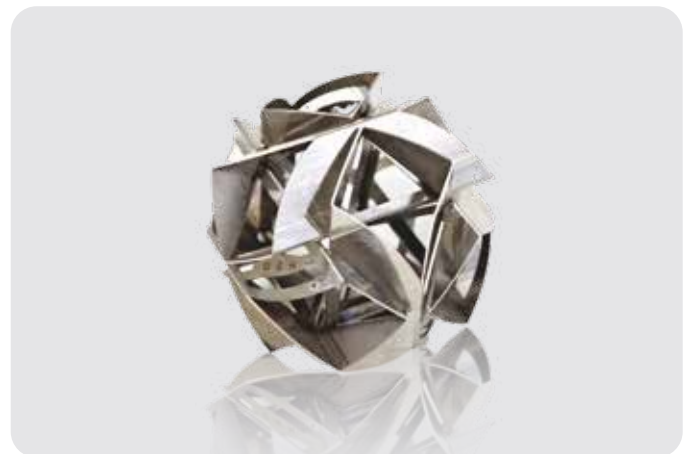
## Powerful Functions Make You Never Spend Time Worrying

- Component Real-time Monitoring and Maintenance Alert  
All components are detected in real time to ensure the stable use and the system is equipped with maintenance alert for careful component management



## Tube Splicing Technology

- The operating control offers 50+ kinds of tube splicing patterns, for convenience of subsequent welding, such as splicing of male and female head of square tube, 90° arc splicing, splicing of round tube tee, splicing of cut-through holes, 45° splicing of hexagon, splicing of angle iron and channel steel, etc.



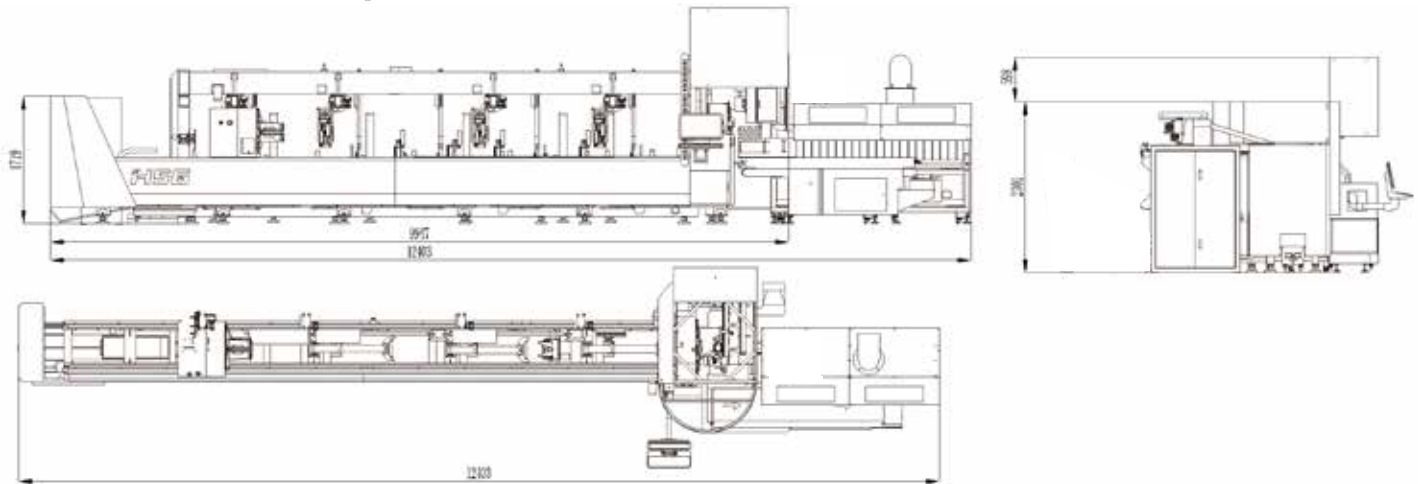
## Leapfrog Technique and Flying Cutting Technique

- Peculiar tube cutting techniques make tube cutting more smooth and efficient.



## Machine Foundation

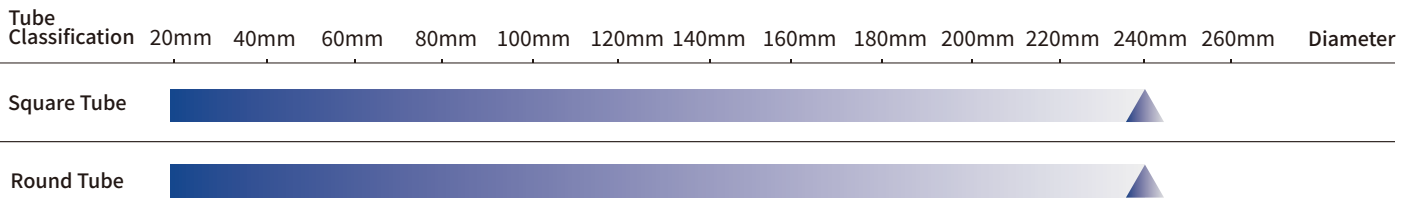
\*The marked size has about 10mm error  
 \*The dimensions of the standard configuration of the machine are for reference only.  
 Please refer to the three views of the order configuration for the actual machine dimensions.



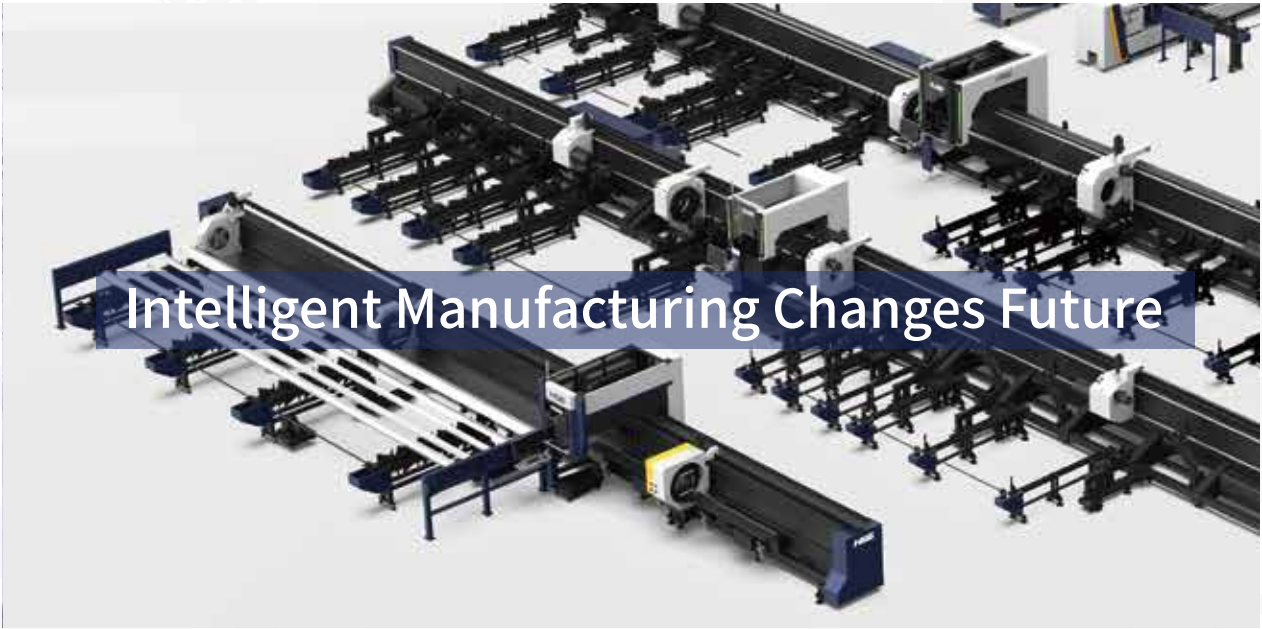
## Cutting Samples



## Cutting Capacity



The actual machines shall prevail and above data & pictures are only for reference.



## Intelligent Manufacturing Changes Future



**As a global enterprise, HSG sticks to providing professional and convenient service support to customers at home and board**



### Professional Training

Multiple technical training service and free operation training for customers and dealers in time



### Efficient Support

Humanistic service model, online services and 7\*24 hotline to offer solutions and assistance



### Optimized Transport

Multi-channel transport solutions and professional transport solution team will provide various transport cases for to satisfy the demand of customers and save transports fees



### Sufficient Accessories

Highly efficient accessories delivery service, multiple network inventory jointly responds to accessories demand to shorten customer's waiting times and accelerate production



### Careful Services

Domestic door-to-door service and free proofing, global 100+dealers provide efficient and convenient services



Intelligent Manufacturing Changes Future



Website



Facebook



Youtube

Headquarters Add.: No. 4, Anye Road, Shunjiang Community Industrial Park,  
Beijiao Town, Shunde District, Foshan, Guangdong, China  
Website: [www.hsglaser.com](http://www.hsglaser.com)  
Email: [info@hsglaser.com](mailto:info@hsglaser.com)  
Tel: +86 757-66833906